

eLead is an Erasmus+ KA202 project - Strategic Partnership for the development of innovation in VET Sector. It has officially started in October 2019 and will last for 28 months.

The eLead project intends to create educational material for VET professionals involved in training processes for managers and workers in small and medium enterprises, in order to implement and promote training paths for the acquisition of e-leadership skills.

In this newsletter you will find the project information in a nutshell and the description of the activities carried out so far.

IO 1 – E-LEAD COMPETENCE MAP

The partnership created a competence map which establishes transparent competences, skills and knowledge connected with High-tech Leader qualification in partner countries.

The competence map was designed through a comparison of the key activities to be carried out by High-tech leaders in partner countries and is based on a clear definition of the high-tech leader profile. The rationality for using these results is due to the needs for structured, in the form of learning outcomes, training for High-tech leaders.

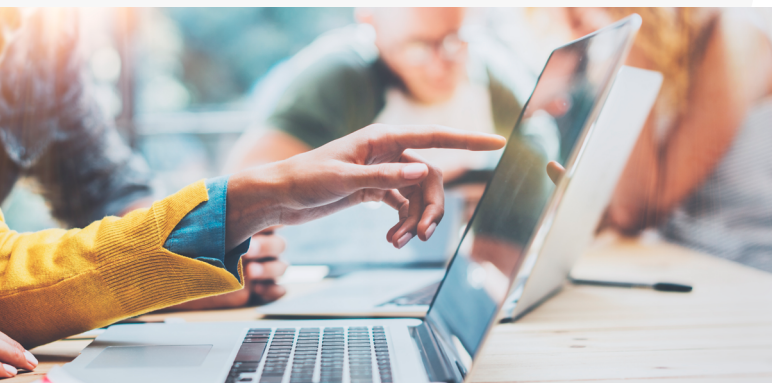
The eLead Competence map has been created based on 4 main phases. During the first phase, the partnership analysed through a desk analysis, curricula and training programs at national level in order to select the relevant competences associated with e-leadership.

During the second phase, the partners identified the common e-leadership competences required by the labour market in partner countries. This task was carried out through an online questionnaire which involved workers, managers and companies in high-tech and digital sector.

The results of the questionnaires have been analysed and refined during the third stage. This phase was carried out through an interview which involved stakeholders and experts in the specific vocational field in partner countries. After having analysed the results of the previous phase, the respondents were asked to identify the minimum set of competences required by an e-Leader, based on their experience.

The final phase consisted in the elaboration of the eLead Competence Map matching the competences selected by the partnership during the previous phases with the European e-Competence Framework.

[You can access and download the entire document here !](#)



THE PROJECT

New technologies, such as ICTs, are a key engine for growth, but they have to be fueled by the ideas of highly-skilled professionals and business leaders.

Nowadays, many European companies, particularly SMEs and start-ups, are often lacking of professionals with the proper skills to put these technologies to effective use, and the risk of wasting their investments and missing key opportunities for growth and competitiveness is high. All across Europe there is a growing need of leaders capable of identifying and designing business models by exploiting key innovation opportunities and by making best use of ICTs.

The project "eLead - Enhancing VET professionals skills for e-leadership education and training" intends to fill this gap by creating educational material for VET professionals involved in training processes for workers and managers in small and medium enterprises, in order to implement and promote training paths for the acquisition of e-leadership skills.

IO2 – E-LEAD PEDAGOGICAL HANDBOOK IS NOW RELEASED!

The eLead Pedagogic Handbook, dedicated to VET professionals, set up the founding principles to support the implementation of a training course for high-tech leaders and includes efficient resources (training modules, methodologies, and tools).



The handbook includes information and resources related to the following topics: definition of the high-tech leader target group and needs, the new technologies and competences required, how to organise and manage a training course or e-leaders, the educational methodologies to be used, ICT tool and resources and case studies.

[You can find the handbook on the project website here !](#)

ENHANCING VET PROFESSIONALS SKILLS
FOR E-LEADERSHIP EDUCATION AND TRAINING

number 2 - JUNE 2021

eLead is an Erasmus+ KA202 project - Strategic Partnership for the development of innovation in VET Sector. It has officially started in October 2019 and will last for 28 months.

The eLead project intends to create educational material for VET professionals involved in training processes for managers and workers in small and medium enterprises, in order to implement and promote training paths for the acquisition of e-leadership skills.

In this newsletter you will find the project information in a nutshell and the description of the activities carried out so far.

IO 3 – E-LEAD MOOC

The partnership started working on the last eLead intellectual Output: a MOOC aiming at educating young professionals about e-leadership, based on five learning modules: Module 1 - Global digital transformation trends, Module 2 - Value capturing of digital trends, Module 3 - Value capturing of digital trends, Module 4 - Team and diversity, Module 5 - Implementation.

The MOOC is addressed to three main targets: a) SMEs employees and managers involved in implementation of digital projects; b) external consultants working in private and public institutions that are supporting SMEs in the digital transformation; c) employees in technology provider firms, who are playing a key role for SMEs digital transformation.

The MOOC will be soon available and freely accessible through the eLead website.



The eLead Transnational Training Course

TU Delft are designing and delivering the eLead training course addressed to 2 VET professionals working in each partner organisation. In this training we will discuss the design of a MOOC for e-leadership and the methods included that will ensure that VET professionals can acquire the e-leadership skills to recognize, evaluate and implement new digital opportunities in their organizations. It is a five day training involving online meetings in the morning and a total of 4 hours work each day.

eLead Multiplier events

Different multiplier events will be organised in all the partner countries to present the project results. All the details will be shared through the project channels.

PARTNERS

eLead activities are implemented by a consortium composed of seven partner organisations from five different European countries : Italy • Belgium • Netherlands • Spain • Greece.

CONTACTS



Assindustria Consulting Ltd
www.confindustria.pu.it/assindustria-consulting
Email: p.cioppi@confindustria.pu.it



Belgian-Italian Chamber of Commerce
www.ccitabel.com/ccib/en/
Email: collavini@ccitabel.com



Co.Meta S.r.l.
www.consultingmeta.com/
Email: g.gabbianelli@consultingmeta.it



Parque Tecnológico de Andalucía
www.pta.es/en
Email: aline@pta.es ; spalomo@pta.es



Institute of Entrepreneurship Development
www.ied.eu
Email: projects@ied.eu



Technische Universiteit Delft
www.tudelft.nl/en/
Email: v.e.scholten@tudelft.nl



Università Politecnica delle Marche
www.univpm.it
Email: d.iacobucci@staff.univpm.it

